

1        **METABOLIC ENGINEERING OF *CLOSTRIDIUM CELLULOLYTICUM* FOR**  
2                    **ISOBUTANOL PRODUCTION FROM CELLULOSE**

3  
4  
5        **Wendy Higashide<sup>1,§</sup>, Yongchao Li<sup>2,§</sup>, Yunfeng Yang<sup>2,‡</sup>, and James C. Liao<sup>1,3\*</sup>**

6  
7        <sup>1</sup>*Department of Chemical and Biomolecular Engineering, University of California, Los*  
8        *Angeles, Los Angeles, CA 90095*

9        <sup>2</sup>*BioEnergy Science Center, Oak Ridge National Laboratory, Oak Ridge, TN 37831*

10        <sup>3</sup>*Institute for Genomics and Proteomics, University of California, Los Angeles, Los*  
11        *Angeles, CA 90095*

12  
13  
14        \*Corresponding author. Mailing address: Department of Chemical and Biomolecular  
15        Engineering, University of California, Los Angeles, 5531 Boelter Hall, 420 Westwood  
16        Plaza, Los Angeles, California 90095, USA. Phone: (310) 825-1656, Fax: (310) 206-  
17        4107. E-mail: [liao@seas.ucla.edu](mailto:liao@seas.ucla.edu).

18        § Both authors contributed equally to this work and are co-first authors.

19        ‡Current address: Department of Environmental Science & Engineering, Tsinghua  
20        University, Beijing 100084, China.

21  
22        Running Title: Isobutanol production from cellulose

23

**ABSTRACT**

24

25

26

27

28

29

30

31

32

Producing biofuels directly from cellulose, known as consolidated bioprocessing, is believed to reduce costs substantially compared to a process in which cellulose degradation and fermentation to fuel are accomplished in separate steps. Here we present a metabolic engineering example to develop a *Clostridium cellulolyticum* strain for isobutanol synthesis directly from cellulose. This strategy exploits the host's natural cellulolytic activity and the amino acid biosynthetic pathway and diverts its 2-keto acid intermediates for alcohol synthesis. Specifically, we have demonstrated the first isobutanol production to approximately 660 mg/L from crystalline cellulose using this microorganism.

33

## INTRODUCTION

34           Compared to biofuels produced from corn (starch-rich) and sugar cane (sucrose-  
35 rich), biofuels obtained from cellulosic materials could result in lower fuel costs (16),  
36 greater petroleum displacement (13), and lower greenhouse gas emissions (16). To meet  
37 its potential, technological advances are needed to improve the conversion efficiency of  
38 the recalcitrant lignocellulose to fermentable sugars (29). So far improvements in  
39 cellulase production (17, 20) and pretreatment techniques (1) have aided in increasing  
40 cellulose degradation efficiency in a cost-effective manner.

41           Another approach which has generated much interest is consolidated  
42 bioprocessing (CBP). This process utilizes microorganisms to perform biomass  
43 hydrolysis and the fermentation of the sugars into biofuel within a single process (16).  
44 Research in this area has taken one of two approaches. In one approach, referred to as  
45 the ‘recombinant cellulolytic strategy’ (14), microorganisms that have previously  
46 demonstrated high biofuel yields are engineered to utilize cellulose and/or the sugars  
47 resulting from cellulose degradation. These organisms have been genetically engineered  
48 to expand their substrate range to include cellulose or the sugars freed from cellulose or  
49 hemicellulose degradation, as in the case of ethanologenic organisms such as *Escherichia*  
50 *coli* (23, 33), *Zymomonas mobilis* (4, 18), and *Saccharomyces cerevisiae* (14, 27).  
51 Research efforts continue on improving the strains’ cellulolytic abilities to industrially  
52 relevant levels. For the ‘native cellulolytic strategy’ (14), research has mainly focused on  
53 microorganisms that possess cellulosomes, which are extracellular multi-enzyme  
54 complexes that aid in the digestion of cellulose. While these microorganisms are capable  
55 of efficiently hydrolyzing cellulose, their biofuel productivities are significantly lower

56 than existing industrial strains. In addition to improving biofuel productivity (22),  
57 research efforts are also focused on increasing ethanol yield (31), eliminating competing  
58 pathways (26), and improving ethanol tolerance (30).

59         Most studies employing the native cellulolytic strategy have been conducted with  
60 the thermophilic, cellulolytic *Clostridium thermocellum*. This strain is particularly  
61 attractive because it will be able to thrive in high-temperature fermentations, which are  
62 conducive to high substrate conversion, low contamination risk, and high product  
63 recovery (15). Although *C. thermocellum* has potential to be a CBP organism, issues  
64 such as low transformation efficiency (28) and the lack of publications demonstrating  
65 successful overexpression of foreign proteins in *C. thermocellum*, significantly impede  
66 the engineering progress of this organism to produce synthetic biofuels, such as  
67 isobutanol. One way to hasten this progress is to first establish and optimize the desired  
68 metabolic pathways in a closely related, more amenable organism. Once the specifics  
69 have been determined, such as identifying which genes to be overexpress, mutate, and/or  
70 delete, the same strategy can then be adapted to *C. thermocellum*. *Clostridium*  
71 *cellulolyticum*, which was originally isolated from decayed grass (21), is a useful  
72 candidate for this initial metabolic engineering work because, like *C. thermocellum*, it  
73 belongs to *Clostridium* group III based on 16S rRNA phylogenetic analysis (7), and as a  
74 mesophile, many problems that are associated with the heterologous expression of  
75 proteins in thermophiles are circumvented. In addition, *C. cellulolyticum* has a  
76 sequenced genome (GenBank Accession: NC\_011898.1), well-established DNA transfer  
77 techniques (24), and methods in gene overexpression (10). As a potential CBP organism  
78 in its own right, *C. cellulolyticum* can not only utilize xylose similar to *C. thermocellum*,

79 but it can also utilize additional sugars freed from hemicellulose degradation, including  
80 arabinose, fructose, galactose, mannose, and ribose (9).

81 Previously, *C. cellulolyticum* has been genetically engineered for improved  
82 ethanol production (10). Similarly, most of the research concerning the construction of a  
83 CBP organism has focused on ethanol production. Despite this, it has been asserted that  
84 higher alcohols, such as isobutanol, are better candidates for gasoline replacement  
85 because they have an energy density, octane value, and Reid vapor pressure that are more  
86 similar to gasoline (5). Unlike ethanol, isobutanol can also be blended at any ratio with  
87 gasoline or used directly in current engines without modification (8). In this study, we  
88 have metabolically engineered *C. cellulolyticum* to produce isobutanol. By expressing  
89 enzymes that direct the conversion of pyruvate to isobutanol using an engineered valine  
90 biosynthesis pathway, we were able to produce up to 660 mg/L of isobutanol using *C.*  
91 *cellulolyticum* growing on crystalline cellulose.

92

93

94

## MATERIALS AND METHODS

95 **Bacterial strains and plasmids.** Strains and plasmids used in this study are listed in  
96 Table 1. Restriction enzymes, phosphatase (New England Biolabs, Ipswich, MA), ligase  
97 (Rapid DNA ligation kit; Roche, Mannheim, Germany), and DNA polymerase (KOD  
98 DNA polymerase; EMD Chemicals, San Diego, CA) were used for cloning.  
99 Oligonucleotides were synthesized by Eurofins MWG Operon (Huntsville, AL).

100 **Chemicals.** Unless indicated otherwise, commercial reagents, enzymes, and coenzymes  
101 were supplied by Sigma Chemical Company (St. Louis, MO).

102 **Media and cultivation.** *C. cellulolyticum* was grown at 34°C in VM medium (11) that  
103 has been modified to reduced precipitation. For 1 liter: KH<sub>2</sub>PO<sub>4</sub> (1.0 g), K<sub>2</sub>HPO<sub>4</sub> (3.4 g),  
104 urea (2.14 g), MgCl<sub>2</sub> · 6·H<sub>2</sub>O (1.0 g), CaCl<sub>2</sub> · 2H<sub>2</sub>O (0.15 g), FeSO<sub>4</sub> · 6H<sub>2</sub>O (1.25 mg), 3-  
105 (N-morpholino)propanesulfonic acid (MOPS, 10.0 g), resazurin (2.0 mg), vitamin  
106 solution (10 ml), yeast extract (2.0 g), oligoelement solution (1 ml) cysteine-HCl (1.0 g),  
107 and cellobiose (5.1345 g). The vitamin solution (100X) contained: biotin (0.08 μM),  
108 pyridoxamine (0.02 μM), cyanocobalamin (0.001 μM), p-aminobenzoic acid (0.15 μM),  
109 thiamine (0.9 μM), and L-alanine (0.22 μM). The 1000X oligoelement solution  
110 contained (in grams liter<sup>-1</sup> unless otherwise indicated): FeSO<sub>4</sub> · 7H<sub>2</sub>O (5.0 g), ZnSO<sub>4</sub> ·  
111 7H<sub>2</sub>O (1.44g), MnSO<sub>4</sub> · 7H<sub>2</sub>O (1.12g), CuSO<sub>4</sub> · 5H<sub>2</sub>O (0.25 g), Na<sub>2</sub>B<sub>4</sub>O<sub>7</sub> (0.20 g),  
112 (Mo)<sub>7</sub>(NH<sub>4</sub>)<sub>6</sub>O<sub>24</sub> · 4H<sub>2</sub>O (1.00 g), NiCl<sub>2</sub> (0.04 g), CoCl<sub>2</sub> (0.02 g), HBO<sub>3</sub> (0.03 g), Na<sub>2</sub>SeO<sub>3</sub>  
113 (0.02 g), and HCl (50 ml of 10 M).

114 For agar plates, 0.8% (wt/vol) of agar (Difco Laboratories, Detroit, MI) was  
115 added to the media. To make competent cells, to prepare cell lysates for enzyme assays,  
116 daily maintenance, and to determine isobutanol production on cellobiose, the strains were  
117 grown in VM modified media. To examine isobutanol, lactate, acetate, and ethanol  
118 production on cellulose, the strains were grown on VM modified media, where cellobiose  
119 and yeast extract were replaced with 10 g/L of crystalline cellulose (Sigma type 50, 50  
120 um).

121 Stock cultures of *C. cellulolyticum* were maintained at -80°C in 15% (vol/vol)  
122 glycerol and were grown for one transfer in cellobiose medium before initiation of growth  
123 experiments.

124 **Transformation.** Cell transformation was conducted as described previously (11) with  
125 some modifications. Cells were grown for 17-24 h in 10 ml cultures of modified VM  
126 media to late exponential phase (OD<sub>600</sub> 0.5 – 1.0,  $5 \times 10^6$  c.f.u./ml). The following steps  
127 were all performed with anoxic solutions under anaerobic conditions at 4°C. The cells  
128 were washed twice with cold electroporation buffer (270 mM sucrose, 1 mM MgCl<sub>2</sub>, 5  
129 mM sodium phosphate buffer, pH 7.4). The cells were resuspended in 600 µl of  
130 electroporation buffer. For each transformation, 200 µl of the cells was mixed with 2 µg  
131 of MspI methylated plasmid DNA. The DNA was methylated overnight with 5 units of  
132 MspI methyltransferase (New England Biolabs, Ipswich, MA), then purified with the  
133 DNA Clean and Concentrator Kit (Zymo Research Inc., Orange, CA). In 2 mm gap  
134 electroporation cuvettes (Molecular BioProducts, San Diego, CA), the cells and plasmid  
135 DNA were electroporated (1.5 kV, 25 µF, and 48 Ω ) with a Bio-Rad gene pulser  
136 apparatus (Bio-Rad Laboratories, Richmond, CA). The electroporated cells were  
137 transferred to 10 ml of fresh modified VM media. The cells were recovered for 24 h at  
138 34°C and then the cells were collected by centrifugation, and cell pellet was spread on  
139 modified VM cellobiose agar plates supplemented with 10 µg/ml erythromycin. The  
140 plates were incubated at 34°C anaerobically for 5 to 7 days. Single colonies were  
141 transferred to 10 ml VM cellobiose medium supplemented with 10 µg/ml erythromycin.

142 **Analytical procedures.** Bacterial growth was measured spectrophotometrically at  
143 600 nm. For cultures containing cellulose, the cellulose was allowed to settle for at least  
144 two hours before samples were taken for measurement.

145 The produced alcohol compounds were quantified by a gas chromatograph (GC)  
146 with a flame ionization detector. The system consisted of model 5890A GC (Hewlett-

147 Packard, Avondale, PA) and a model 7673A automatic injector, sampler, and controller  
148 (Hewlett-Packard). The separation of alcohol compounds was carried out using a DB-  
149 WAX capillary column (30 m, 0.32 mm-inside diameter, 0.50- $\mu$ m film thickness)  
150 purchased from Agilent Technologies (Santa Clara, CA). The GC oven temperature was  
151 initially held at 40°C for 5 min and raised with a gradient of 15°C/min until reaching  
152 120°C. It was then raised with a gradient of 50°C/min until 230°C and held for 4 min.  
153 Helium was used as the carrier gas, with 9.3-lb/in<sup>2</sup> inlet pressure. The injector and  
154 detector were maintained at 225°C. Supernatant of culture broth (0.5  $\mu$ l) was injected in  
155 split injection mode with a 1:15 split ratio. Pentanol was used as the internal standard.

156 **Enzyme Assays.** The cells were grown for 17-24 h in 50 ml cultures of modified VM  
157 media to late exponential phase (OD<sub>600</sub> 0.5 – 1.0,  $5 \times 10^6$  c.f.u./ml). The cells were  
158 harvested, washed in 50 mM potassium phosphate buffer, pH 7.5, and resuspended in 0.5  
159 ml of the same buffer. Crude extract was prepared under aerobic conditions with 0.1-mm  
160 glass beads and a Mini Bead Beater 8 (BioSpec Products, Inc., Bartlesville, OK). Total  
161 protein measurements were made with the Bradford protein assay kit from Bio-Rad  
162 (Hercules, CA).

163 The AlsS assay was performed as described previously (32), with the exception  
164 that the reaction mixture contained 20 mM sodium pyruvate, 100mM MOPS buffer, pH  
165 7.0, 1 mM MgCl<sub>2</sub>, and 100  $\mu$ M cocarboxylase. The concentration of acetoin produced  
166 was determined by a standard curve created using pure acetoin. One specific unit of AlsS  
167 activity corresponds to the formation of 1 nmol of acetoin per min per mg of soluble  
168 protein at 34°C.



169 To measure the reduction of 2-acetolactate to 2,3-dihydroxy-isovalerate, the  
170 oxidation of NADPH was monitored by a decrease in absorbance at 340 nm. The  
171 substrate, 2-acetolactate, was first produced in a separate reaction as described for the Als  
172 assay using purified, heterogeneously expressed *B. subtilis* AlsS in *E. coli* strain BL21.  
173 From this reaction 180  $\mu\text{l}$  was added to 200 mM potassium phosphate buffer, pH 7.5, 4  
174 mM  $\text{MgCl}_2$ , and 0.1 mM NADPH. The samples were incubated at 34°C for 5 min, then  
175 the reaction was initiated with the addition of cell extracts. The consumption of NADPH  
176 was monitored at 340 nm (extinction coefficient,  $6.22 \text{ mM}^{-1}\text{cm}^{-1}$ ). IlvC activity is  
177 expressed as nmol of NADPH oxidized per min per mg of soluble protein at 34°C.

178 The IlvD assay was performed as described previously (12). The 500  $\mu\text{l}$  reaction  
179 mixture contained 5 mM  $\text{MgSO}_4$ , 50 mM Tris-Cl, pH 8.0, cell extract, and 10 mM 2,3-  
180 dihydroxy-isovalerate. The substrate, 2,3-dihydroxy-isovalerate, was synthesized as  
181 described previously (6). After the reaction mixture was preincubated for 5 min at 34°C,  
182 the substrate was added to initiate the reaction. The samples were incubated for 15 min at  
183 34°C. The reaction was terminated by the addition of 125  $\mu\text{l}$  of 10% (wt/vol)  
184 trichloroacetic acid, then 250  $\mu\text{l}$  of saturated 2,4-dinitrophenylhydrazine in 2 N HCl was  
185 added to the samples. After 20 min at room temperature, 875  $\mu\text{l}$  of 2.5 N NaOH was  
186 added and then the samples were incubated for another 30 min at room temperature. The  
187 samples were then spun down for 1 min to remove coagulated protein. Sample  
188 absorbances were measured at 550 nm. Standard curves were created from known  
189 amounts of 2-ketoisovalerate. The specific activity was calculated as 1 nmol of 2-  
190 ketoisovalerate synthesized per min per mg of soluble protein at 34°C.

191           The decarboxylation activity of Kivd was assayed as described previously (34)  
192 with some modifications. Kivd activity was measured at 34 °C using a coupled  
193 enzymatic assay method. ADH6 was isolated as previously described (34). Excess  
194 ADH6 was used to reduce aldehyde into alcohol, and concomitantly, cofactor NADPH  
195 was oxidized to NADP<sup>+</sup>. The assay mixture contained 0.2 mM NADPH, 0.1 μM ADH6  
196 and 20 mM 2-ketoisovalerate in assay buffer (50 mM potassium phosphate buffer, pH  
197 7.0, 1 mM MgSO<sub>4</sub>, 0.5 mM ThDP) with a total volume of 0.2 mL. The reactions were  
198 started by the addition of the 2-ketoisovalerate. The consumption of NADPH was  
199 monitored at 340 nm (extinction coefficient, 6.22 mM<sup>-1</sup>cm<sup>-1</sup>). One specific unit of Kivd  
200 activity corresponds to the oxidation of 1 nmol of NADPH per min per mg of soluble  
201 protein at 34°C.

202           To measure the alcohol dehydrogenase activities of YqhD and AdhA, the  
203 oxidation of NADPH was monitored by a decrease in absorbance at 340 nm. The assay  
204 mixture contained 50 mM MOPS, pH 7.0, 25 mM isobutyraldehyde, and 0.2 mM  
205 NAD(P)H. The samples were incubated at 34°C for 5 min, then the reaction was initiated  
206 with the addition of cell extracts. The consumption of NAD(P)H was monitored at 340  
207 nm (extinction coefficient, 6.22 mM<sup>-1</sup>cm<sup>-1</sup>). One specific unit of ADH activity  
208 corresponds to the oxidation of 1 nmol of NAD(P)H per min per mg of soluble protein at  
209 34°C.

210

211

212

## RESULTS

213 **A single base pair insertion in *alsS* enables expression in *C. cellulolyticum*.** In order  
214 to achieve direct isobutanol production from pyruvate, the genes encoding *B. subtilis*  $\alpha$ -  
215 acetolactate synthase, *E. coli* acetohydroxyacid isomeroreductase, *E. coli* dihydroxy acid  
216 dehydratase, *L. lactis* ketoacid decarboxylase, and *E. coli* alcohol dehydrogenase (Fig.  
217 1A) were cloned into a pAT187 derivative plasmid (25). These specific genes were  
218 chosen because they were the same genes utilized for isobutanol production in *E. coli* (2)  
219 and *S. elongatus* (3). The different combinations of the genes (Fig. 1B) were cloned as  
220 single synthetic operons driven by the constitutive ferredoxin (Fd) promoter from  
221 *Clostridium pasteurianum*.

222 The activities of the first three enzymes in the isobutanol pathway were examined  
223 by transforming plasmids expressing *alsS* or *alsS ilvCD* into *C. cellulolyticum*. While *C.*  
224 *cellulolyticum* was successfully transformed with the empty vector, no *C. cellulolyticum*  
225 *alsS* or *alsS ilvCD* transformants were obtained. The same results were observed after  
226 repeated transformation efforts. Due to the fact that *alsS* and *alsS ilvCD* transformants  
227 could not be obtained, the complete isobutanol pathway was then examined. *C.*  
228 *cellulolyticum* was transformed with a plasmid expressing *alsS ilvCD kivd adhA*. While  
229 transformants were obtained, sequencing confirmation of the plasmid revealed that a  
230 single adenine insertion, which is not found in the wild-type *alsS* sequence, was present  
231 54 bp downstream of the start ATG. This single insertion, by shifting the reading frame,  
232 results in a downstream premature stop codon (TGA) and, subsequently, a truncated 37  
233 amino acid protein (Fig. 2). This spontaneous mutation in *alsS* (\**alsS*\*) was found to  
234 have originated in the *E. coli* strain used for cloning.

235           The frame shift mutation in the *alsS* sequence was a cause for great concern  
236 because of the effect it could have on AlsS activity. Thus, to determine the activities of  
237 AlsS and the other enzymes expressed from the synthetic operon, enzymatic assays were  
238 performed on lysates of the *C. cellulolyticum* strain expressing *\*alsS ilvCD kivd adhA*  
239 (Fig. 3A). Surprisingly, for the AlsS assay, the *\*alsS ilvCD kivd adhA* lysates were  
240 found to demonstrate an activity of 282 nmol min<sup>-1</sup> mg<sup>-1</sup>, which was significantly higher  
241 than the 11 nmol min<sup>-1</sup> mg<sup>-1</sup> demonstrated by the strain transformed with the vector (Fig.  
242 3A). Thus, despite the insertion mutation, the mutant retained a significant level of  
243 activity. However, unlike AlsS, we were not able to detect enzymatic activity for IlvC  
244 (Fig. 3B), IlvD (Fig. 3C), Kivd (Fig. 3D), or AdhA (Fig. 3E). There were no statistically  
245 significant differences in activity for these enzymes in the lysates of *\*alsS ilvCD kivd*  
246 *adhA* expressing strain and the vector control strain.

247           The presence of AlsS activity, despite the stop codon introduced by the frameshift  
248 mutation, suggests that the 37 amino acid truncated protein is not the only translation  
249 product. It is likely that an alternate Shine-Delgarno (SD) sequence and start site are  
250 present downstream of the insertion. After examining the sequence, we have identified a  
251 likely candidate for the alternative SD and start site (Fig. 2), which is approximately 8  
252 and 23 bp, respectively, downstream from the adenine insertion. This would result in an  
253 AlsS that is 25 amino acids shorter than the wild-type AlsS, and explain the activity in  
254 the transformants.

255           To further analyze the activity of the *alsS* mutation, we compared the AlsS and  
256 *\*AlsS* activities in *E. coli* because we were unable to obtain a *C. cellulolyticum*  
257 transformant expressing the wild-type *alsS*. Figure 4 compares the AlsS activities of *E.*

258 *coli* expressing the *\*alsS ilvCD* and *alsS ilvCD* constructs. While the *\*alsS* mutation  
259 presented no significant activity in *E. coli*, wild-type *alsS* demonstrated activity that was  
260 approximately 1000-fold higher than the empty vector. This result highly suggests that  
261 the mutation significantly reduces the activity of AlsS. This difference in activity may  
262 explain why *C. cellulolyticum* cannot be transformed with constructs that contain *alsS* as  
263 the first gene in the operon, which was the case for *alsS*, *alsS ilvCD*, and *alsS ilvC ilvD*  
264 *kivd adhA* (Fig. 1B).

265 **Production of isobutanol from cellobiose and cellulose.** Despite the mutation in *alsS*,  
266 *\*alsS ilvCD kivd adhA* was found to produce isobutanol titers of 140 mg/L from  
267 cellobiose over a period of 90 h (Fig. 5C) and 420 mg/L (Fig. 5D) on cellulose over a  
268 period of 13 days. These titers are significantly higher than the 17 mg/L and 30 mg/L of  
269 isobutanol that is produced by the strain transformed with the empty vector on cellobiose  
270 and cellulose, respectively (Fig. 5C and D).

271 In order to test our hypothesis of the wild-type AlsS's toxic effect on *C.*  
272 *cellulolyticum* growth during transformation, and to obtain transformants with the wild-  
273 type AlsS, it was necessary to decrease the activity of the wild-type AlsS. To achieve  
274 this, *kivd yqhD alsS ilvCD* was constructed with which *alsS* was the third gene in the  
275 operon. Previously, it has been shown that mRNA abundance decreases with increasing  
276 distance of the gene from the promoter, irrespective of gene content (19). Specifically,  
277 for the operons that they studied, they found that mRNA abundance decreased by  
278 approximately 50% from one gene to the next (19). Thus, as the third gene in the operon,  
279 it would be expected that the *alsS* mRNA abundance would be less than that if *alsS* was  
280 the first gene in the operon. After successful transformation of *kivd yqhD alsS ilvCD*, the

281 resulting transformants were found to produce up to 364 mg/L of isobutanol on  
282 cellobiose over a period of 90 h (Fig. 5C) and 660 mg/L of isobutanol on cellulose within  
283 7-9 days (Fig. 5D).

284 Although successful transformation suggested that AlsS activity had been  
285 successfully attenuated, enzyme assays were performed to quantify the activity of AlsS  
286 and the other genes in the operon. As seen in Figure 3A, AlsS activity for the strain  
287 expressing *kivd yqhD alsS ilvCD* resulted in approximately 10-fold higher AlsS activity  
288 than the vector control, with activities of 133 and 11 nmol min<sup>-1</sup> mg<sup>-1</sup>, respectively (Fig.  
289 3A). For Kivd activity, the *kivd yqhD alsS ilvCD* expressing strain had 19-fold higher  
290 Kivd activity than the strain expressing the vector alone with activities of 147.1 and 7.9  
291 nmol min<sup>-1</sup> mg<sup>-1</sup>, respectively (Fig. 3D). Unlike AlsS and Kivd, no activity could be  
292 detected for IlvC (Fig. 3B), IlvD (Fig. 3C), and YqhD (Fig. 3E) when *kivd yqhD alsS*  
293 *ilvCD* was expressed. There were no statistically significant differences in activity for  
294 these enzymes when comparing the *kivd yqhD alsS ilvCD* expressing strain and the  
295 vector control strain.

296

297

298

## DISCUSSION

299 Previously, we had successfully shown that *E. coli* can be metabolically  
300 engineered to produce the isobutanol by manipulating *E. coli*'s amino acid biosynthetic  
301 pathway by diverting the 2-keto acid intermediates towards biofuel production (2). Using  
302 the same metabolic engineering strategy, we were able to achieve an isobutanol titer of  
303 660 mg/L by the cellulolytic mesophile *C. cellulolyticum* by expressing *kivd yqhD alsS*

304 *ilvCD*. To our knowledge, this is the first demonstration of isobutanol production directly  
305 from cellulose.

306 We encountered several difficulties with *C. cellulolyticum* that we did not meet  
307 with *E. coli* in regards to the expression of the isobutanol pathway. One of these  
308 difficulties arose from the lack of an inducible expression system in *C. cellulolyticum*.  
309 Without the ability to control gene expression, the toxicity of some of the genes had a  
310 greater effect on the microorganism's growth than they would have otherwise.  
311 Specifically, the expression of the gene that encodes for acetolactate synthase, *alsS*,  
312 appears to have a toxic effect in *C. cellulolyticum* which is evidenced by the lack of *alsS*,  
313 *alsS ilvCD*, and *alsS ilvCD kivd adhA* transformants. Moreover, this problem with  
314 transformation is alleviated when the amount of *alsS* mRNA is decreased, as in the case  
315 for *\*alsS*, *\*alsS ilvCD*, *\*alsS ilvCD kivd adhA*, and *kivd yqhD alsS ilvCD* constructs. It is  
316 likely that the control conferred by an inducible system would aid in tempering the  
317 expression level of AlsS, and subsequently, its inhibitory growth effects.

318 Another difficulty we encountered was the lack of detectable activity for IlvC,  
319 IlvD, and the alcohol dehydrogenases (ADHs) AdhA and YqhD. From the enzyme  
320 activity assays (Fig. 3), we were unable to detect activities that were significantly greater  
321 than that found for the vector control. However, despite the results of the enzyme assays,  
322 it appears that some activity is present. For example, although no activity was detected  
323 for Kivd and AdhA in *C. cellulolyticum* transformed with *\*alsS ilvCD kivd adhA*, it  
324 appears that there is *in vivo* activity as the *\*alsS ilvCD kivd adhA* transformants were  
325 found to produce an isobutanol titer of 428 mg/L, while *\*alsS ilvCD* transformants had a  
326 titer of 278 mg/L. It is not surprising that the lack of these enzyme activities did not

327 preclude isobutanol production because *C. cellulolyticum* possesses native enzymes that  
328 can perform the same functions. Homologues of *ilvC* and *ilvD* are part of *C.*  
329 *cellulolyticum*'s valine biosynthesis pathway and *C. cellulolyticum* possesses ADHs for  
330 ethanol fermentation. Still, additional IlvC, IlvD, and ADH activity would most likely  
331 lead to higher isobutanol titers. Differences in GC content and codon usage frequencies  
332 between *C. cellulolyticum* and *E. coli* may explain the lack of expression of the *E. coli*  
333 genes in the host *C. cellulolyticum*. The utilization of *C. cellulolyticum ilvC*, *ilvD*, and  
334 *ADH* genes, or the codon optimization of the *E. coli* genes may resolve this problem.

335         A significant amount of research has been dedicated to engineering organisms  
336 that are capable of consolidated bioprocessing. These CBP organisms are anticipated to  
337 have the ability to efficiently degrade cellulose and to convert the resulting sugars to  
338 biofuels at high productivities. Towards this goal, the production of isobutanol from  
339 cellulose has been shown to be feasible in the mesophilic *C. cellulolyticum*. Both the  
340 successes and problems encountered in establishing this pathway in *C. cellulolyticum* will  
341 aid in the adaptation of this strategy in related cellulolytic thermophiles, such as *C.*  
342 *thermocellum* and *Caldicellulosiruptor bescii*.

343

344

345

#### ACKNOWLEDGMENTS

346         This work was supported in part by the BioEnergy Science Center (BESC) at Oak  
347 Ridge National Laboratory, a Department of Energy Bioenergy Research Center, and by  
348 UCLA-DOE Institute for Genomics and Proteomics.



349 The authors thank P. Courvalin from the Institut Pasteur for kindly providing  
350 pAT187 and M. Young from the University of Wales for pECN2.

351

352

353

354

355

## REFERENCES

- 356 1. **Alvira, P., E. Tomas-Pejo, M. Ballesteros, and M. J. Negro.** 2009. Pretreatment  
357 technologies for an efficient bioethanol production process based on enzymatic  
358 hydrolysis: A review. *Bioresour Technol* **101**:4851-61.
- 359 2. **Atsumi, S., T. Hanai, and J. C. Liao.** 2008. Non-fermentative pathways for  
360 synthesis of branched-chain higher alcohols as biofuels. *Nature* **451**:86-89.
- 361 3. **Atsumi, S., W. Higashide, and J. C. Liao.** 2009. Direct photosynthetic recycling  
362 of carbon dioxide to isobutyraldehyde. *Nat Biotechnol* **27**:1177-80.
- 363 4. **Brestic-Goachet, N., P. Gunasekaran, B. Cami, and J. C. Baratti.** 1989.  
364 Transfer and Expression of an *Erwinia chrysanthemi* Cellulase Gene in  
*Zymomonas mobilis*. *J Gen Microbiol* **135**:893-902.
- 365 5. **Cascone, R.** 2008. Biobutanol - A replacement for bioethanol? *Chemical*  
366 *Engineering Progress* **104**:S4-S9.
- 367 6. **Cioffi, E. A., K. J. Shaw, W. F. Bailey, and C. M. Berg.** 1980. Improved  
368 synthesis of the sodium salt of DL-alpha, beta-dihydroxyisovaleric acid. *Anal.*  
369 *Biochem.* **104**:485-488.
- 370 7. **Collins, M. D., P. A. Lawson, A. Willems, J. J. Cordoba, J. Fernandez-**  
371 **Garayzabal, P. Garcia, J. Cai, H. Hippe, and J. A. E. Farrow.** 1994. The  
372 Phylogeny of the Genus *Clostridium*: Proposal of Five New Genera and Eleven  
373 New Species Combinations, p. 812-826. vol. 44.

- 374 8. **Durre, P.** 2007. Biobutanol: an attractive biofuel. *Biotechnol J* **2**:1525-34.
- 375 9. **Gowen, C. M., and S. S. Fong.** 2010. Exploring biodiversity for cellulosic  
376 biofuel production. *Chem Biodivers* **7**:1086-97.
- 377 10. **Guedon, E., M. Desvaux, and H. Petitdemange.** 2002. Improvement of  
378 cellulolytic properties of *Clostridium cellulolyticum* by metabolic engineering.  
379 *Appl Environ Microbiol* **68**:53-8.
- 380 11. **Jennert, K. C., C. Tardif, D. I. Young, and M. Young.** 2000. Gene transfer to  
381 *Clostridium cellulolyticum* ATCC 35319. *Microbiology* **146 Pt 12**:3071-80.
- 382 12. **Kiritani, K., S. Narise, and R. P. Wagner.** 1966. The Dihydroxy Acid  
383 Dehydratase of *Neurospora crassa*, p. 2042-2046. vol. 241.
- 384 13. **Kojima, M. a. J., T.** 2005. Potential for Biofuels for Transport in Developing  
385 Countries Energy Sector Management Assistance Programme (ESMAP), Energy  
386 and Water Department, The World Bank Group.
- 387 14. **la Grange, D. C., R. den Haan, and W. H. van Zyl.** 2010. Engineering  
388 cellulolytic ability into bioprocessing organisms. *Appl Microbiol Biotechnol*  
389 **87**:1195-208.
- 390 15. **Lynd, L.** 1989. Production of ethanol from lignocellulosic materials using  
391 thermophilic bacteria: Critical evaluation of potential and review, p. 1-52.  
392 *Lignocellulosic Materials*, vol. 38. Springer Berlin / Heidelberg.
- 393 16. **Lynd, L. R., W. H. van Zyl, J. E. McBride, and M. Laser.** 2005. Consolidated  
394 bioprocessing of cellulosic biomass: an update. *Curr Opin Biotechnol* **16**:577-83.
- 395 17. **Merino, S. T., and J. Cherry.** 2007. Progress and challenges in enzyme  
396 development for biomass utilization. *Adv Biochem Eng Biotechnol* **108**:95-120.

- 397 18. **Moniruzzaman, M., B. S. Dien, C. D. Skory, Z. D. Chen, R. B. Hespell, N. W.**  
398 **Y. Ho, B. E. Dale, and R. J. Bothast.** 1997. Fermentation of corn fibre sugars by  
399 an engineered xylose utilizing *Saccharomyces* yeast strain. *World Journal of*  
400 *Microbiology & Biotechnology* **13**:341-346.
- 401 19. **Nishizaki, T., K. Tsuge, M. Itaya, N. Doi, and H. Yanagawa.** 2007. Metabolic  
402 engineering of carotenoid biosynthesis in *Escherichia coli* by ordered gene  
403 assembly in *Bacillus subtilis*. *Appl Environ Microbiol* **73**:1355-61.
- 404 20. **Percival Zhang, Y. H., M. E. Himmel, and J. R. Mielenz.** 2006. Outlook for  
405 cellulase improvement: Screening and selection strategies. *Biotechnology*  
406 *Advances* **24**:452-481.
- 407 21. **Petitdemange, E., F. Caillet, J. Giallo, and C. Gaudin.** 1984. *Clostridium*  
408 *cellulolyticum* sp. nov., a Cellulolytic, Mesophilic: Species from Decayed Grass,  
409 p. 155-159. vol. 34.
- 410 22. **Roberts, S. B., C. M. Gowen, J. P. Brooks, and S. S. Fong.** 2010. Genome-  
411 scale metabolic analysis of *Clostridium thermocellum* for bioethanol production.  
412 *BMC Syst Biol* **4**:31.
- 413 23. **Srivastava, R., G. P. Kumar, and K. K. Srivastava.** 1995. Construction of a  
414 recombinant cellulolytic *Escherichia coli*. *Gene* **164**:185-6.
- 415 24. **Tardif, C., H. Maamar, M. Balfin, and J. P. Belaich.** 2001.  
416 Electrotransformation studies in *Clostridium cellulolyticum*. *J Ind Microbiol*  
417 *Biotechnol* **27**:271-4.

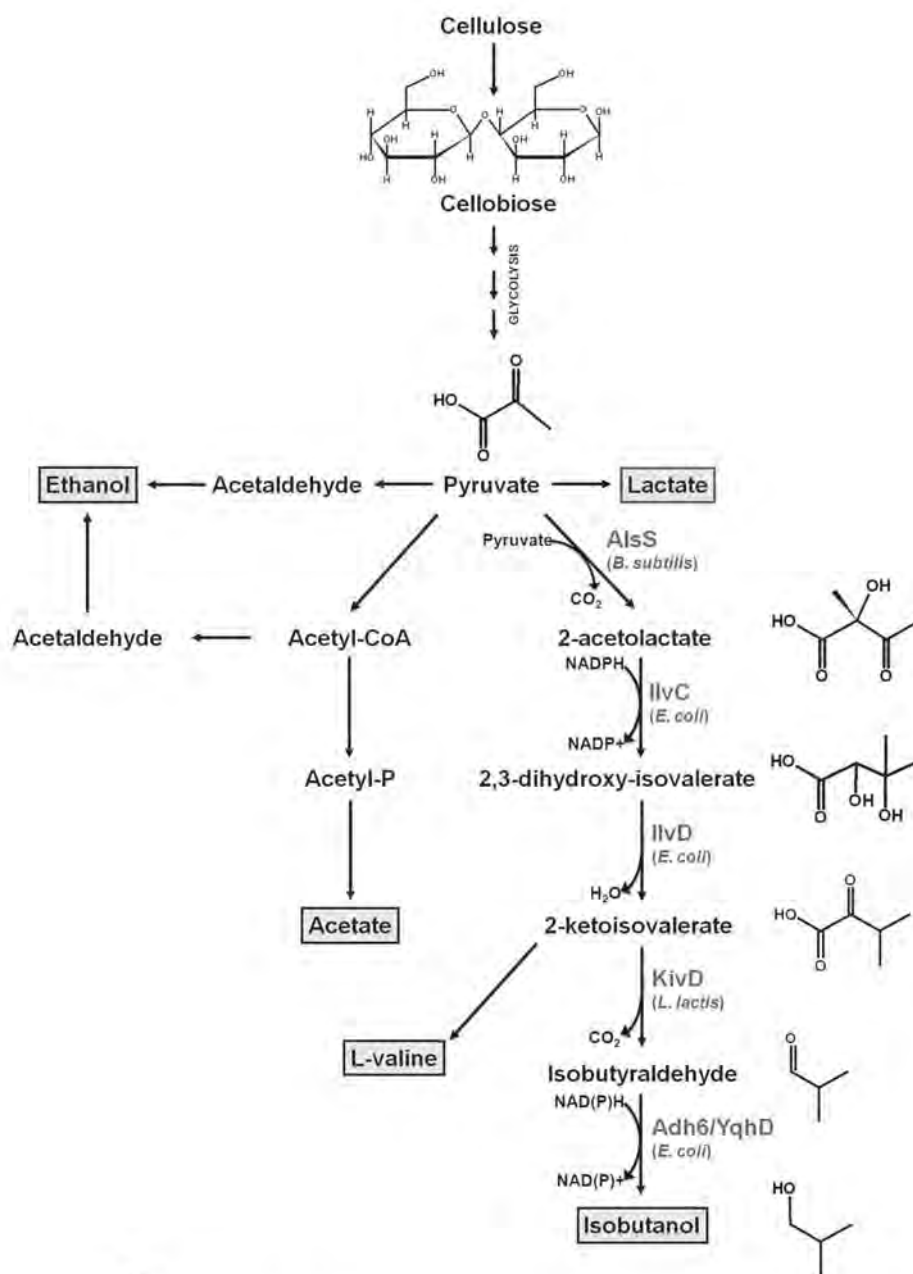
- 418 25. **Trieu-Cuot, P., C. Carlier, P. Martin, and P. Courvalin.** 1987. Plasmid  
419 transfer by conjugation from *Escherichia coli* to Gram-positive bacteria. *FEMS*  
420 *Microbiology Letters* **48**:289-294.
- 421 26. **Tripathi, S. A., D. G. Olson, D. A. Argyros, B. B. Miller, T. F. Barrett, D. M.**  
422 **Murphy, J. D. McCool, A. K. Warner, V. B. Rajgarhia, L. R. Lynd, D. A.**  
423 **Hogsett, and N. C. Caiazza.** 2010. Development of *pyrF*-based genetic system  
424 for targeted gene deletion in *Clostridium thermocellum* and creation of a *pta*  
425 mutant. *Appl Environ Microbiol*:AEM.01484-10.
- 426 27. **Tsai, S. L., J. Oh, S. Singh, R. Chen, and W. Chen.** 2009. Functional assembly  
427 of minicellulosomes on the *Saccharomyces cerevisiae* cell surface for cellulose  
428 hydrolysis and ethanol production. *Appl Environ Microbiol* **75**:6087-93.
- 429 28. **Tyurin, M. V., S. G. Desai, and L. R. Lynd.** 2004. Electrotransformation of  
430 *Clostridium thermocellum*. *Appl Environ Microbiol* **70**:883-90.
- 431 29. **van Zyl, W. H., L. R. Lynd, R. den Haan, and J. E. McBride.** 2007.  
432 Consolidated bioprocessing for bioethanol production using *Saccharomyces*  
433 *cerevisiae*. *Adv Biochem Eng Biotechnol* **108**:205-35.
- 434 30. **Williams, T. I., J. C. Combs, B. C. Lynn, and H. J. Strobel.** 2007. Proteomic  
435 profile changes in membranes of ethanol-tolerant *Clostridium thermocellum*.  
436 *Appl Microbiol Biotechnol* **74**:422-32.
- 437 31. **Xu, C., Y. Qin, Y. Li, Y. Ji, J. Huang, H. Song, and J. Xu.** 2010. Factors  
438 influencing cellulosome activity in Consolidated Bioprocessing of cellulosic  
439 ethanol. *Bioresour Technol*.

- 440 32. **Yang, Y. T., M. Peredelchuk, G. N. Bennett, and K. Y. San.** 2000. Effect of  
441 variation of *Klebsiella pneumoniae* acetolactate synthase expression on metabolic  
442 flux redistribution in *Escherichia coli*. *Biotechnology and Bioengineering* **69**:150-  
443 159.
- 444 33. **Yoo, J. S., Y. J. Jung, S. Y. Chung, Y. C. Lee, and Y. L. Choi.** 2004. Molecular  
445 cloning and characterization of CMC<sub>Case</sub> gene (*celC*) from *Salmonella*  
446 typhimurium UR. *J Microbiol* **42**:205-10.
- 447 34. **Zhang, K., M. R. Sawayab, D. S. Eisenberg, and J. C. Liao.** 2008. Expanding  
448 metabolism for biosynthesis of nonnatural alcohols. *Proceedings of the National*  
449 *Academy of Sciences* **105**:20653-8.
- 450
- 451

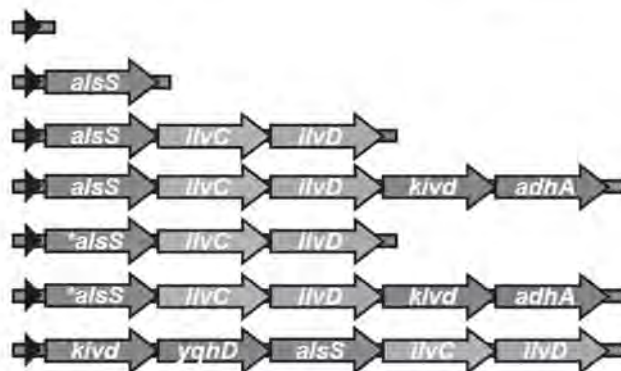
Strain or Plasmid	Phenotype, genotype, or construction description	Source
<b>Strains</b>		
<i>E. coli</i> XL10-Gold	Tet <sup>r</sup> , Δ( <i>mcrA</i> )183, Δ( <i>mcrCB-hsdSMR-mrr</i> )173, <i>endA1</i> , <i>supE44</i> , <i>thi-1</i> , <i>recA1</i> , <i>gyrA96</i> , <i>relA1</i> , <i>lac Hte</i> , [F <sup>+</sup> <i>proAB</i> , <i>lacI</i> <sup>2</sup> ZΔM15, Tn10( <i>tet</i> <sup>r</sup> ) Amy Cam] <sup>3</sup>	Stratagene
<i>C. cellulolyticum</i> H10	ATCC 35319	ATCC
<b>Plasmids</b>		
pAT187	Km <sup>r</sup> ; Broad host range plasmid	(24)
pWH159	Km <sup>r</sup> ; 5.5 kb <i>EcoRI</i> fragment of pAT187 was ligated with the <i>EcoRI</i> fragment of the PCR product of pAT187, For oligo WH177, Rev oligo WH178.	This study
pWH168	Em <sup>r</sup> Km <sup>r</sup> ; <i>ermC</i> was cloned into pWH159 by ligating the <i>AatII-PstI</i> fragment of PCR product, For oligo WH248, Rev oligo WH249, with pECN2 (11) as the template	This study
pWH199	Em <sup>r</sup> Km <sup>r</sup> ; The ferredoxin promoter and multiple cloning site (Sup Fig. 1) were cloned into pWH168 with the <i>BssHII-AgeI</i> fragment of PCR product, For oligo WH194, Rev oligo WH195. The template was synthesized by PCR assembly, using 18 primers (FD1 to FD18).	This study
pWH203 (* <i>alsS-ilvC-ilvD</i> )	Em <sup>r</sup> Km <sup>r</sup> ; 0.8 kb <i>BamHI-XbaI</i> fragment of pWH315 was cloned into the same sites of pWH277	This study
pWH277 (* <i>alsS-ilvC-ilvD</i> )	Em <sup>r</sup> Km <sup>r</sup> ; <i>alsS</i> from <i>B. subtilis</i> and <i>ilvCD</i> from <i>E. coli</i> was amplified from pSA69 (2), For oligo WH301, Rev oligo WH302; <i>BamHI-NotI</i> fragment of PCR product ligated into the <i>BamHI</i> and <i>NotI</i> sites of pWH199	This study
pWH278 (* <i>alsS</i> )	Em <sup>r</sup> Km <sup>r</sup> ; <i>alsS</i> from <i>B. subtilis</i> was amplified from pSA69 (2), For oligo WH261, Rev oligo WH262; <i>BamHI-NotI</i> fragment of PCR product ligated into the same restriction sites as pWH199	This study
pWH314 (* <i>alsS-ilvCD-kivd-adhA</i> )	Em <sup>r</sup> Km <sup>r</sup> ; <i>kivd</i> from <i>L. lactis</i> and <i>adhA</i> from <i>E. coli</i> were amplified by PCR amplification using pSA65 (2) as a template, For oligo WH886, Rev oligo WH885; <i>NotI-BamHI</i> fragment of PCR product ligated into <i>NotI</i> and <i>BglII</i> sites of pWH203	This study
pWH315 (* <i>alsS-ilvC-ilvD-kivd-adhA</i> )	Em <sup>r</sup> Km <sup>r</sup> ; Spontaneous mutation in <i>alsS</i>	This study
pWH318 (* <i>kivd-yqhD</i> )	Em <sup>r</sup> Km <sup>r</sup> ; <i>kivd</i> from <i>L. lactis</i> and <i>yqhD</i> from <i>E. coli</i> were amplified by PCR from pCS97 (C. Shen, unpublished), For oligo WH888, Rev oligo WH887; <i>Acc65I-BamHI</i> fragment of PCR product ligated into the <i>Acc65I</i> and <i>BamHI</i> sites of pWH199	This study
pWH320 (* <i>kivd-yqhD-alsS-ilvC-ilvD</i> )	Em <sup>r</sup> Km <sup>r</sup> ; <i>alsS</i> from <i>B. subtilis</i> and <i>ilvCD</i> from <i>E. coli</i> was amplified from pSA69 (2), For oligo WH900, Rev oligo WH901; <i>SpeI-NotI</i> fragment of PCR product ligated into the <i>XbaI</i> and <i>NotI</i> sites of pWH318	This study

\* Abbreviations: For, forward primer; Rev, reverse primer.

**A**



**B**



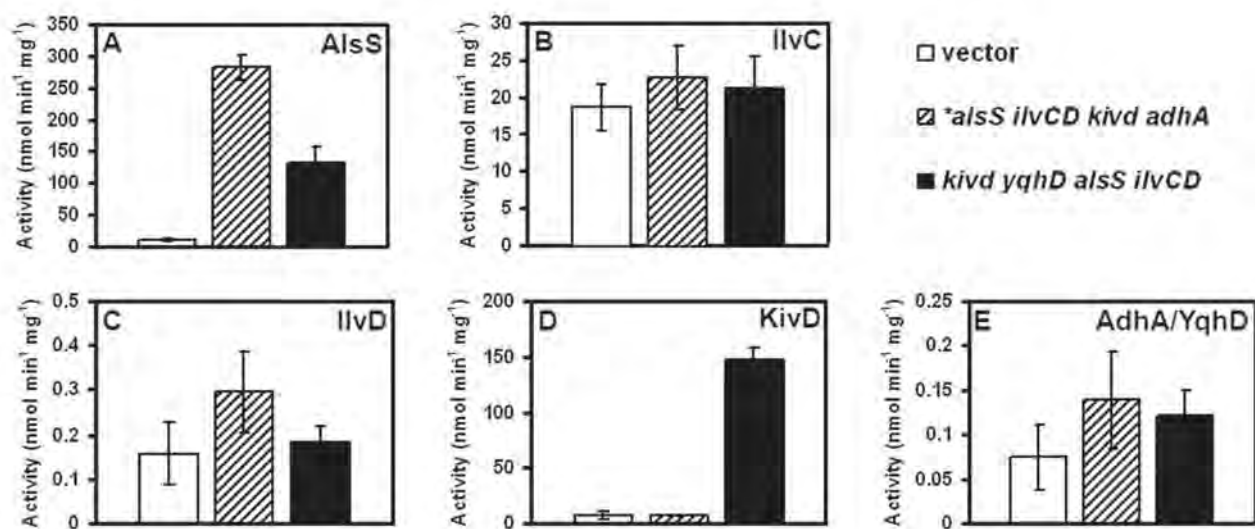
1 ATG ACC ATG ATT ACG AAT TCG AGC TCG GTA  
M T M I T N S S S V

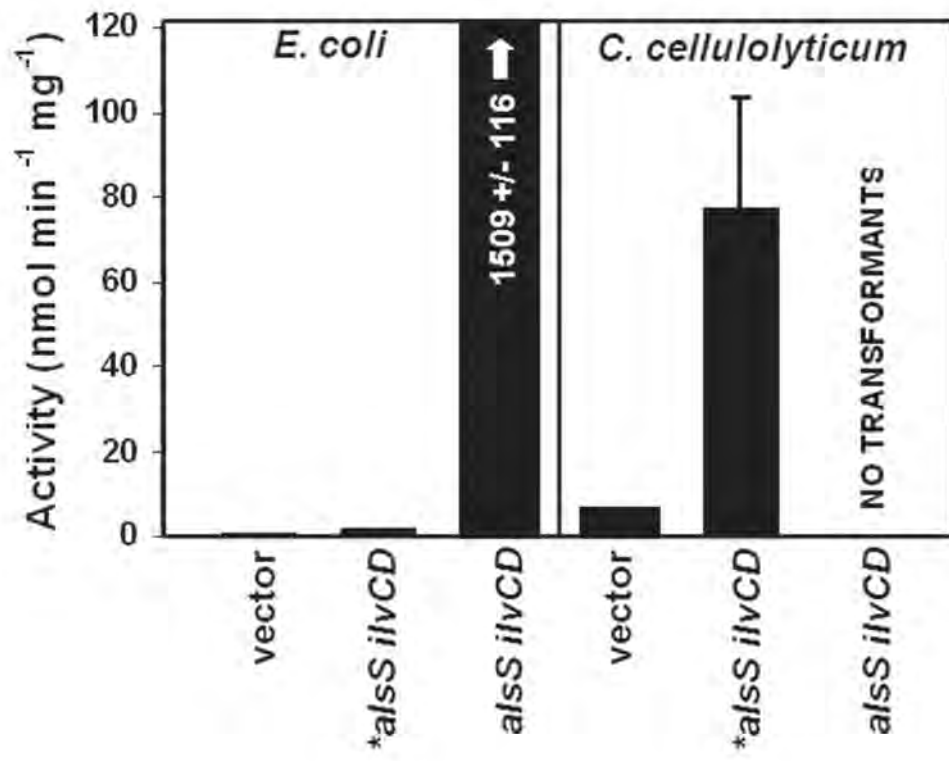
31 CCC GGG GAT CCA TGG TTG ACA AAA GCA AAC  
P G D P W L T K A N

61 AAA AGA ACA AAA ATC CCT TGT GAA AAA CAG  
K R T K I P C E K Q

91 AGG GGC GGA GCT TGT TGT TGA TTG CTT AGT  
R G G A C C \* L L S







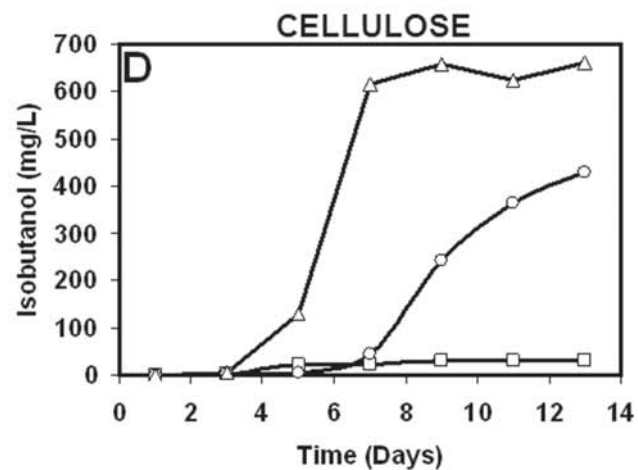
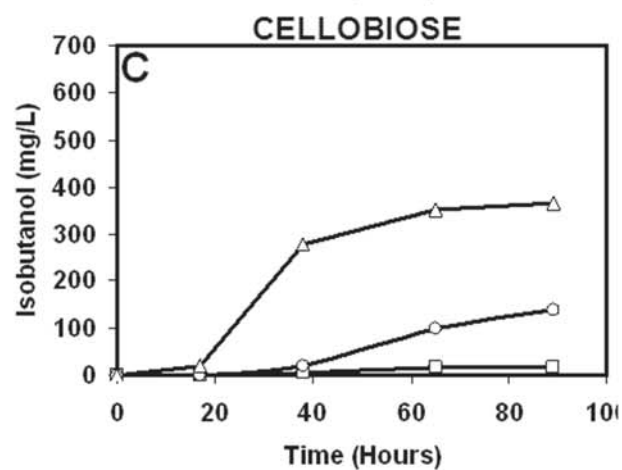
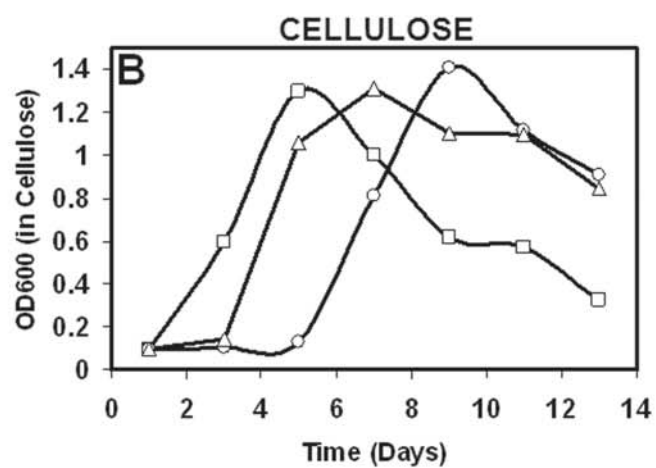
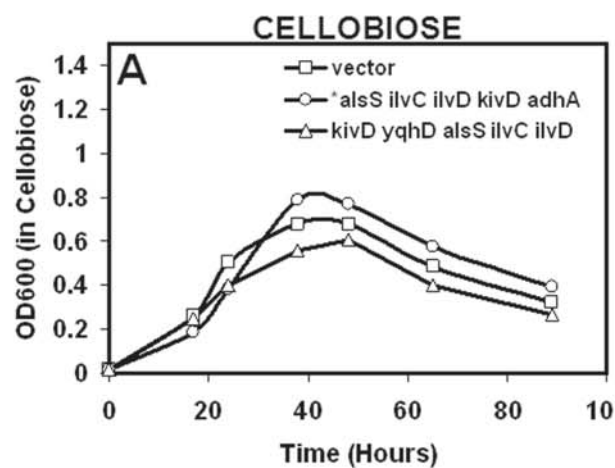


Table 1. List of plasmids and strains used in this study.

FIG. 1. (A) The pathway for isobutanol production in *C. cellulolyticum* and (B) the ferredoxin promoter (black arrow) driven operons used in this study. The “\*” indicates the presence of the adenine insertion in the *alsS* gene sequence.

FIG. 2. The first 120 bp of the *alsS* sequence with the adenine insertion mutation. The adenine insertion (solid box), the putative start GTG, which restores the *alsS* reading frame (underline), the premature stop codon (\*), and the putative Shine Delgarno sequence (dashed box) are indicated.

FIG. 3. Activity assays of isobutanol pathway enzymes for *C. cellulolyticum* strains expressing the empty vector (white box), \**alsS ilvCD kivd adhA* (black striped box), and *kivd yqhD alsS ilvCD* (black box), determining the activity for (A) AlsS (one specific unit of Als activity corresponds to the formation of 1 nmol of acetoin per min per mg of soluble protein at 37°C, (B) IlvC (one specific unit of IlvC activity corresponds to the oxidation of 1 nmol of NADPH per min per mg of soluble protein at 37°C, (C) IlvD (one specific unit of IlvD activity corresponds to the formation of 1 nmol of 2-ketoisovalerate per min per mg of soluble protein at 37°C), (D) Kivd (one specific unit of Kivd activity corresponds to the oxidation of 1 nmol of NADPH per min per mg of soluble protein at 30°C), and (E) AdhA and YqhD activity (one specific unit of ADH activity corresponds to the oxidation of 1 nmol of NAD(P)H per min per mg of soluble protein at 37°C).

FIG. 4. AlsS activity of *E. coli* and *C. cellulolyticum* expressing the vector, \**alsS ilvCD* construct, or the *alsS ilvCD* construct. One specific unit of AlsS activity corresponds to the formation of 1 nmol of acetoin per min per mg of soluble protein at 37°C.

FIG. 5. Growth of *C. cellulolyticum* strains on (A) cellobiose and (B) cellulose and the isobutanol production (mg/L) on (C) cellobiose and (D) cellulose. The figure shows one representative data set of three independent experiments, all three showing comparable results.